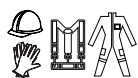


1. Required Tools/Items



Personal Protective Equipment



Flex-S3 Plug and Play Cable-CEE7/7



Flex-S3 Disconnect Tool

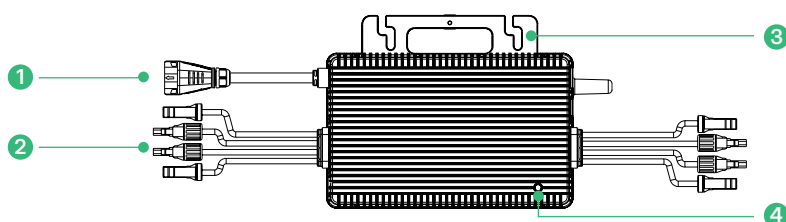


M8 Screws



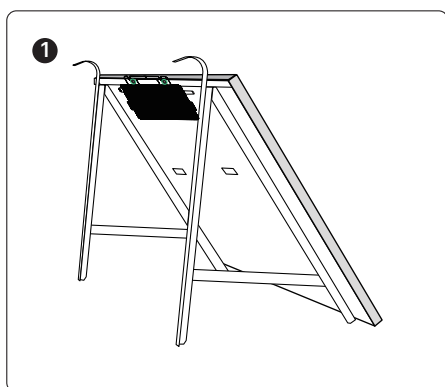
Electrical Screwdriver
(2 to 9 N·m)

2. Product Overview



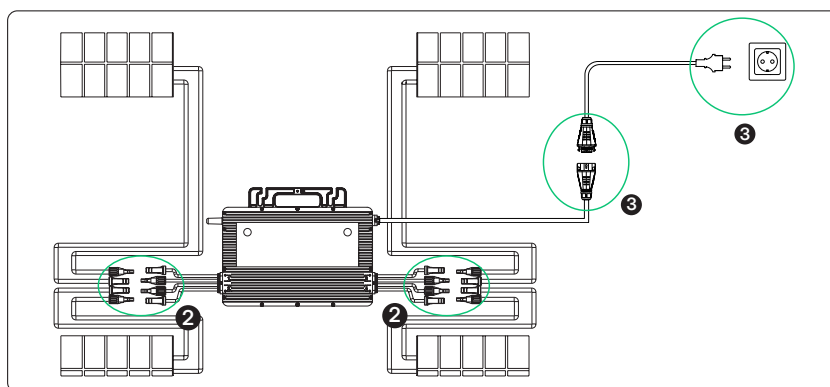
1	AC Connector
2	DC Connectors
3	Mounting Bracket
4	LED Indicator

3. Installation



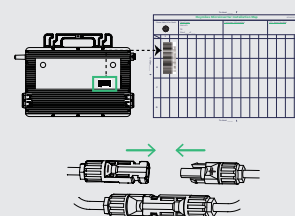
1 Mount the microinverter

- Attach the microinverter to the PV module mounting bracket.
Note: For ventilation and heat dissipation, the silver side should face the PV module.
- Secure the microinverter to the bracket with M8 screws (torque: 9 N·m). Do not over-torque.



2 Connect the PV module

- Peel off the microinverter's removable SN label, and affix the label to the respective location on the installation map (included in the DTU's packaging).
- Connect the microinverter's positive connectors (female MC4 connector with a "-" sign) to the PV modules' positive terminals (male MC4 connector).
- Connect the microinverter's negative connectors (male MC4 connector with a "+" sign) to the PV modules' negative terminals (female MC4 connector).
- Mount the PV modules above the microinverter.



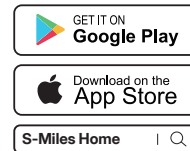
- Connect one end of the Flex-S3 Plug and Play Cable-CEE7/7 to the microinverter and the other end to the socket.

4 Verify LED status

- Wait five minutes for the system to start generating power.
- Check the LED indicator. (Flashing Green: System is operating normally. Solid red or no LED: System error.)

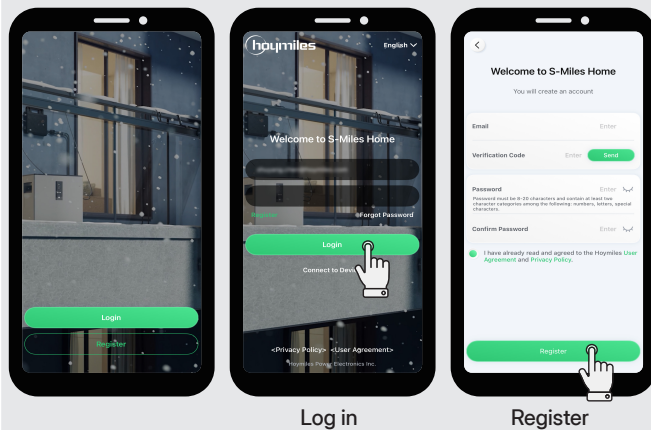
4. Monitoring Activation

Downloading the S-Miles Home: You can scan the QR code or search S-Miles Home in Google Play for Android and App Store for iOS.



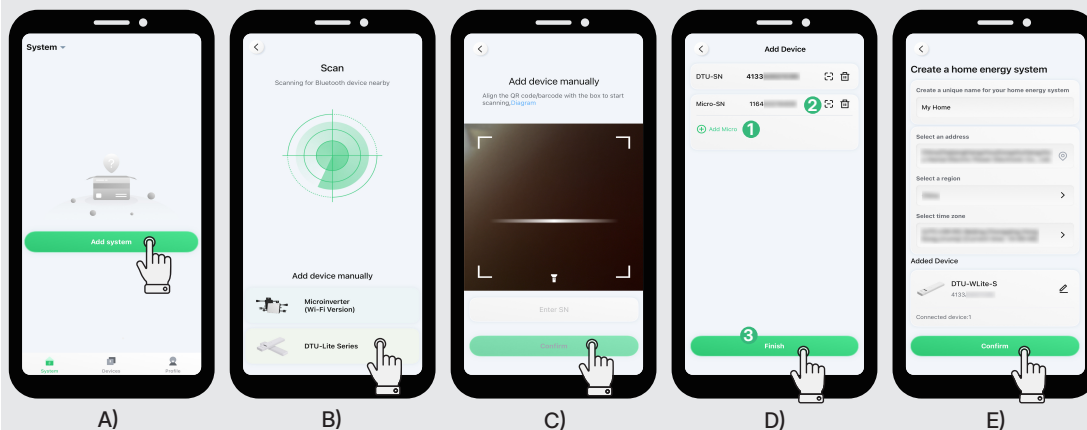
Registration and Login

- If you have registered a DIY account for S-Miles Installer, you can log in S-Miles Home using this DIY account.
- If you don't have an account, you need to register an account.



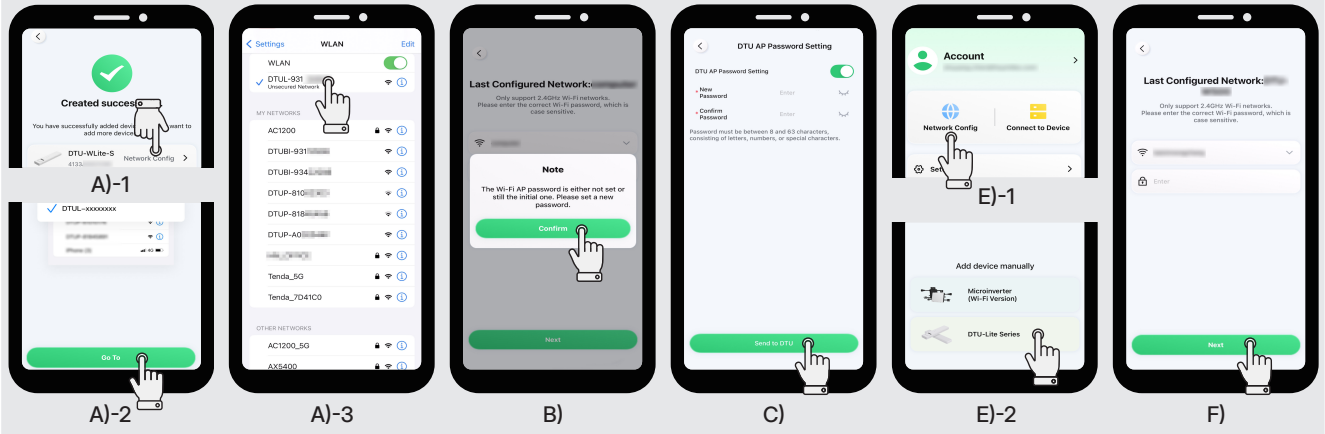
System Creation

- Tap **System** > **Add System**.
- On the Add device manually part, tap **DTU-Lite Series**.
- Scan the SN on the DTU or enter the SN manually, and tap **Confirm**.
- Tap **Add Micro**, scan the SN on the microinverter or enter the SN manually. Then tap **Finish**.
- Fill in the required information to create a home energy system, and tap **Confirm**.



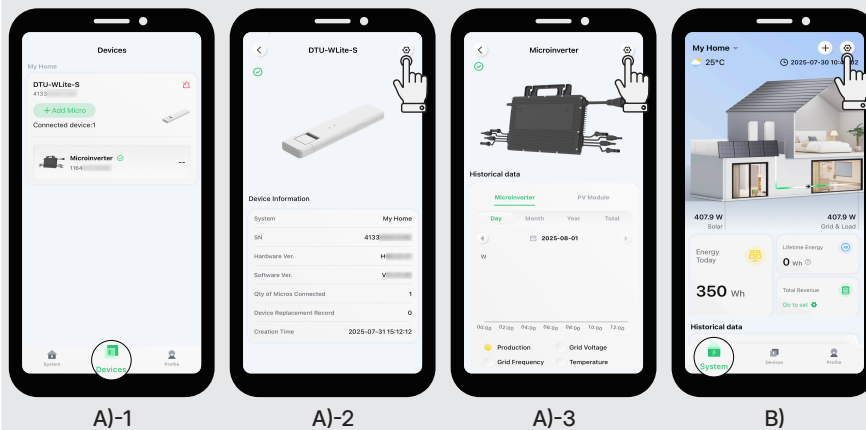
Network Configuration

- Tap **Network Config** > **Go To**. Then select the DTU's network from the list. (The network name of the DTU consists of DTUL and the last eight digits of SN.)
- Return to the App, and tap **Confirm**.
- Set the new AP password and tap **Send to DTU**.
- Wait for about 30 s, and reconnect the DTU's network using the new password.
- Return to the App, and tap **Profile** > **Network Config** > **DTU-Lite Series**.
- Select or enter the router's Wi-Fi name, enter the password, and tap **Next**.
- When the connection is successful, disconnect the DTU's network.



Settings

- On the **Devices** screen, tap the added DTU or microinverter to view the device performance. And tap **Device settings** to view device information, details, configure network, etc.
- Tap **System** to view the system performance. And tap **System Settings** to view system information, adjust output power, etc.



CE Declaration of Conformity

Hoymiles Microinverter (model: HMS-1600/1800/2000-4T) is a class B product. In a domestic environment, this product may cause radio interference, in which case the user may be required to take adequate measures. Operating Frequency (at maximum transmitting power): 863 to 870 MHz, ERP<14 dBm.

EU Declaration of Conformity

Hoymiles Microinverter (model: HMS-1600/1800/2000-4T) is in compliance with the essential requirements and other relevant provisions of directives 2014/53/EU, 2009/125/EC, 2011/65/EU and (EU)2015/863. The original EU Declaration of Conformity may be found at <https://www.hoymiles.com/download-center.html>.